

# **IT9000 Control Software**

## **PV6000 Installation Instruction**

## Notices

© Itech Electronic, Co., Ltd. 2019  
No part of this manual may be reproduced in any form or by any means (including electronic storage and retrieval or translation into a foreign language) without prior permission and written consent from Itech Electronic, Co., Ltd. as governed by international copyright laws

### Manual Part Number

IT9000-PV6000

### Revision

1st Edition: Jul. 15th, 2019  
Itech Electronic, Co., Ltd.

### Trademarks

Pentium is U.S. registered trademarks of Intel Corporation.

Microsoft, Visual Studio, Windows and MS Windows are registered trademarks of Microsoft Corporation in the United States and/or other countries and regions.

## Warranty

The materials contained in this document are provided “as is”, and is subject to change, without prior notice, in future editions. Further, to the maximum extent permitted by applicable laws, ITECH disclaims all warranties, either express or implied, with regard to this manual and any information contained herein, including but not limited to the implied warranties of merchantability and fitness for a particular purpose. ITECH shall not be held liable for errors or for incidental or indirect damages in connection with the furnishing, use or application of this document or of any information contained herein. Should ITECH and the user enter into a separate written agreement with warranty terms covering the materials in this document that conflict with these terms, the warranty terms in the separate agreement shall prevail.

### Technology Licenses

The hardware and/or software described herein are furnished under a license and may be used or copied only in accordance with the terms of such license.

### Restricted Rights Legend

Restricted permissions of the U.S. government. Permissions for software and technical data which are authorized to the U.S. Government only include those for custom provision to end users. ITECH provides this customary commercial license in software and technical data pursuant to FAR 12.211 ( Technical Data) and 12.212 ( Computer Software) and, for the Department of Defense, DFARS 252.227-7015 ( Technical Data – Commercial Items) and DFARS 227.7202-3 ( Rights in Commercial Computer Software or Computer Software Documentation).

## Safety Notices

### CAUTION

A CAUTION sign denotes a hazard. It calls attention to an operating procedure or practice that, if not correctly performed or adhered to, could result in damage to the product or loss of important data. Do not proceed beyond a CAUTION sign until the indicated conditions are fully understood and met.

---

### WARNING

A WARNING sign denotes a hazard. It calls attention to an operating procedure or practice that, if not correctly performed or adhered to, could result in personal injury or death. Do not proceed beyond a WARNING sign until the indicated conditions are fully understood and met.

---



### NOTE

A NOTE sign denotes important hint. It calls attention to tips or supplementary information that is essential for users to refer to.

## Content

<b>Chapter1</b>	<b>Introduction.....</b>	<b>1</b>
1.1	About this manual .....	1
1.2	Document Information .....	1
1.3	Brief Introduction .....	1
1.4	Software Matching Relationship and Mode of Access.....	2
<b>Chapter2</b>	<b>Installing Software.....</b>	<b>4</b>
2.1	Installing Operating System .....	4
2.2	Installing NI 488.2 Driver .....	4
2.3	Installing NI VISA.....	7
2.4	Installing ICP Driver .....	12
2.5	Installing IT9000 Software .....	16
2.6	Verifying the Installation.....	17
<b>Chapter3</b>	<b>Removing Software .....</b>	<b>18</b>

---

# Chapter1 Introduction

---

## 1.1 About this manual

This manual, as an installation and operation guide for the user, includes the following contents:

- Introduction
- Installing Software
- Removing Software

## 1.2 Document Information

The supporting documentations of IT9000-PV6000 are as follows which can be accessed via the CD supplied with the instrument or ITECH official website.

Manual Title	Description
IT9000-PV6000 Installation Instruction	Explain how to install, inspect the software, and how to connect accessories.
IT9000-PV6000 User Manual	Introduce the functions and operating methods of IT9000-PV6000.

## 1.3 Brief Introduction

IT9000-PV6000 is a kind of easy-to-use and practicable control software designed by Itech Electronic Co., Ltd. It is applicable to Itech IT6000C, IT6000B, IT6000D and IT8000 Series power supply. With this software, you can take all operations for power front panel via computer control and enjoy great convenience in remote control. This software supports RS232, USB, GPIB and Ethernet port communication.

## 1.4 Software Matching Relationship and Mode of Access

Software matching relationship required by IT9000 is as follows:

Item	Version	Obtained Method
Operating System	WIN7 32/64, WIN8 32/64, WIN10 32/64	Download from the official website
OFFICE	2003/2007	Download from the official website
Net Frame Work	Net Frame Work 4.0 or above	Download from the official website
VISA	V5.2 or above	Recommend to download from the original company. The download site:  <a href="http://www.ni.com/download/ni-visa-5.2/3337/en/">http://www.ni.com/download/ni-visa-5.2/3337/en/</a>
NI (Used to develop GPIB applications, no installation is required if this feature is not involved.)	NI488.2 3.0.2 or above	Recommend to download from the original company. The download site:  <a href="http://www.ni.com/en-us/support/downloads/drivers/download.ni-488-2.html">http://www.ni.com/en-us/support/downloads/drivers/download.ni-488-2.html</a>
ICP	ICP460 or above	Recommend to download from the original company. The download site:  <a href="http://www.ni.com/download/ivi-compliance-package-4.6/4027/en/">http://www.ni.com/download/ivi-compliance-package-4.6/4027/en/</a>
IT9000 Software	IT9000_V1.0.0 .7_PV6000_V1 .0.0.0	Obtained from delivery CD

Note

When downloading related software on the official website of NI, you can choose to download according to the operating system adaptation version information provided in the “Operating System”.

# Chapter 2 Installing Software

## 2.1 Installing Operating System

Install operating systems of corresponding versions based on installation requirements. For detailed installation steps, refer to corresponding operation guidance on Windows operating system installation software.

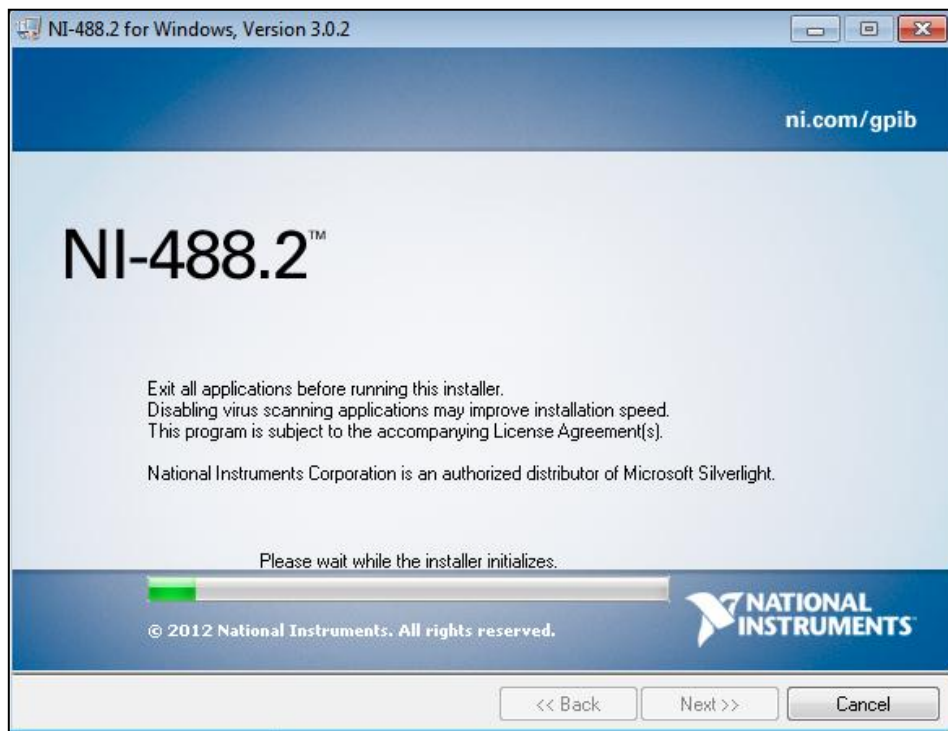
To use Export function of IT9000 software, be sure to install OFFICE software.

## 2.2 Installing NI 488.2 Driver

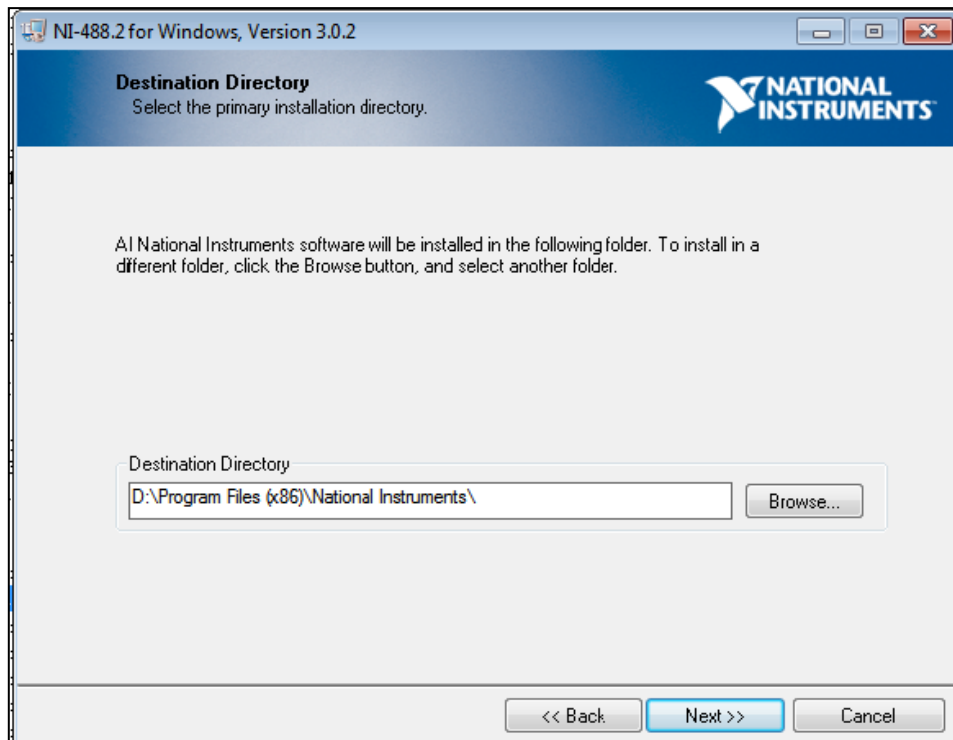
It is applicable to industrial standards for developing GPIB applications. Windows NI-488.2 integrates a complete set of developing tools to enable fast starting and operation of applications, and its high-performance drivers save test time and improve efficiency to the maximum extent.

### Procedure

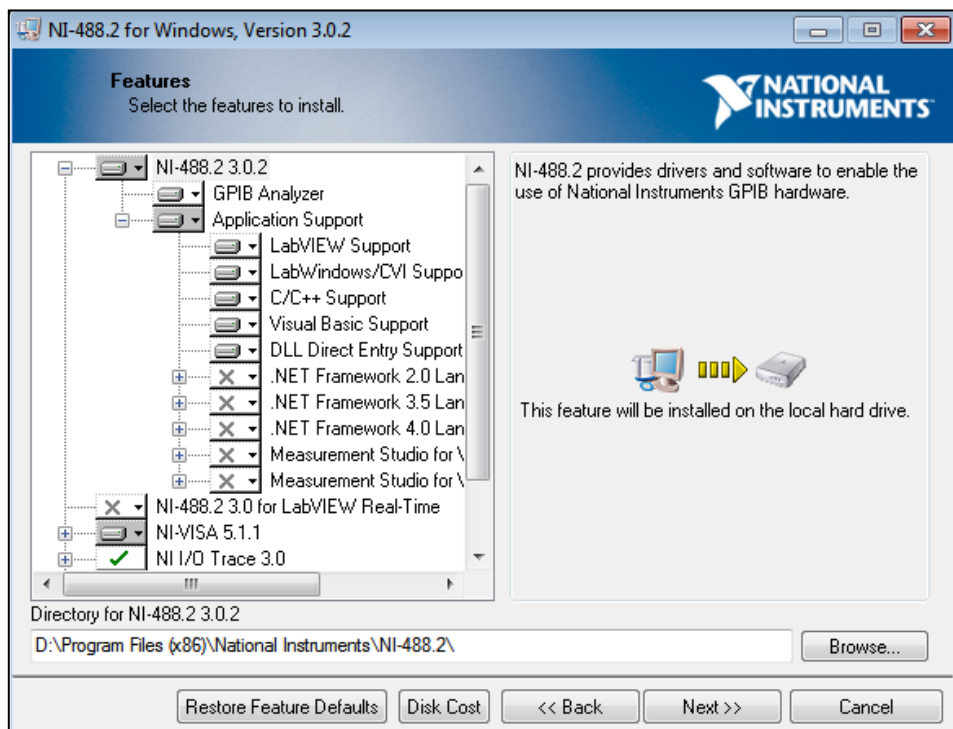
1. Run setup.exe in the folder Install Package.



2. Click "Next" to enter the Select Page of Installation Directory.

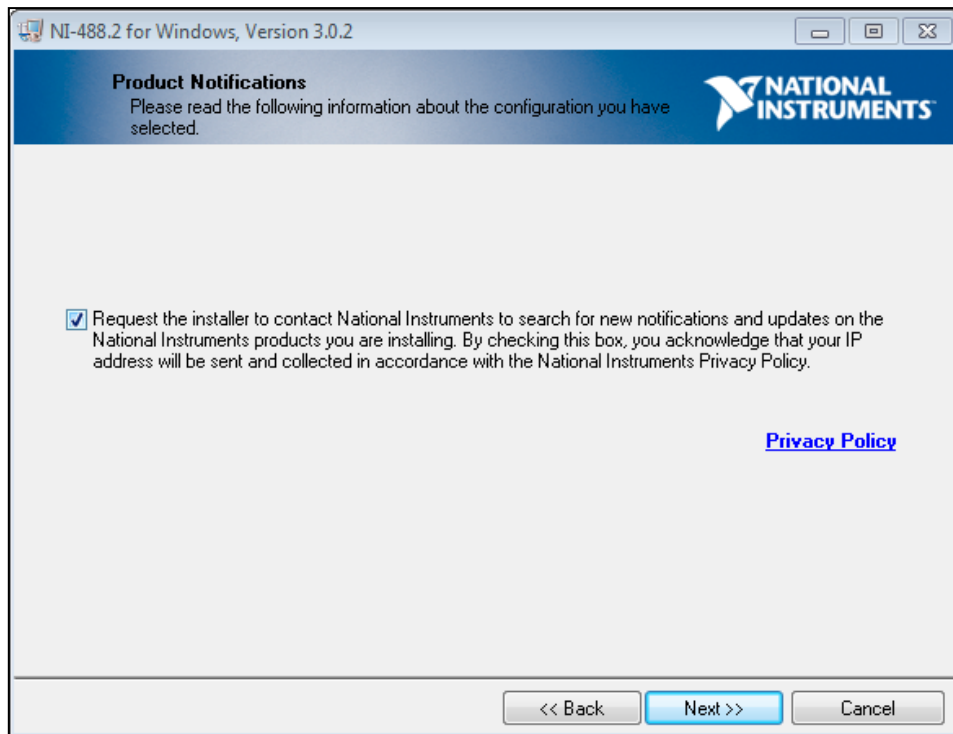


3. Click “Next” to select the components to be installed. If there are no special requirements, keep the default settings.

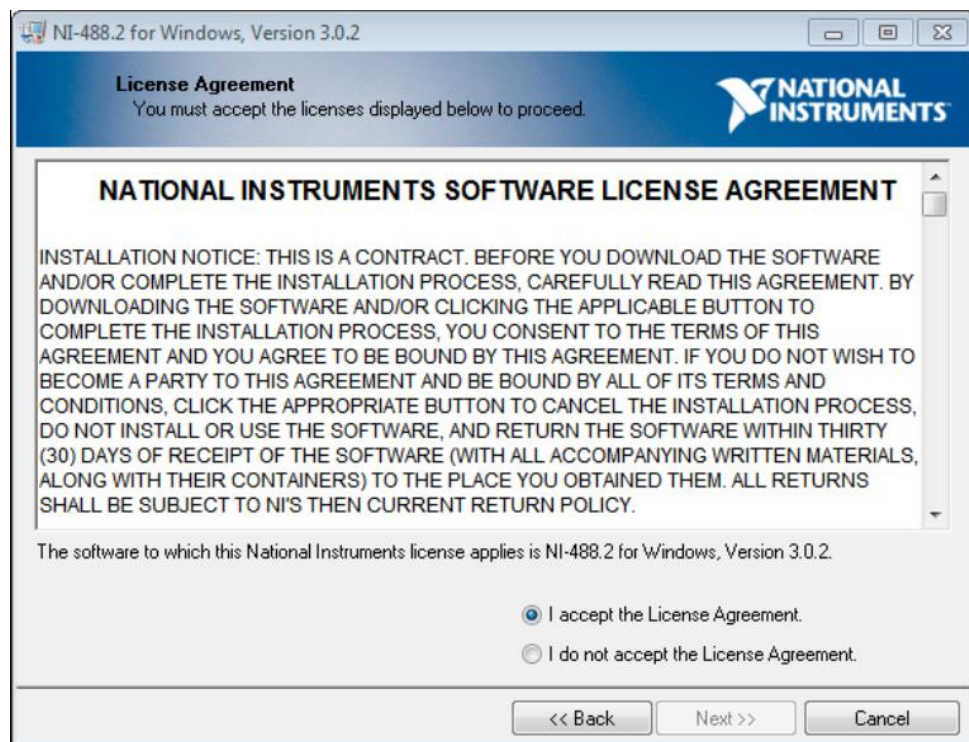


4. Click “Next” and select whether to check the check box as shown below in the “Product Notice” page.

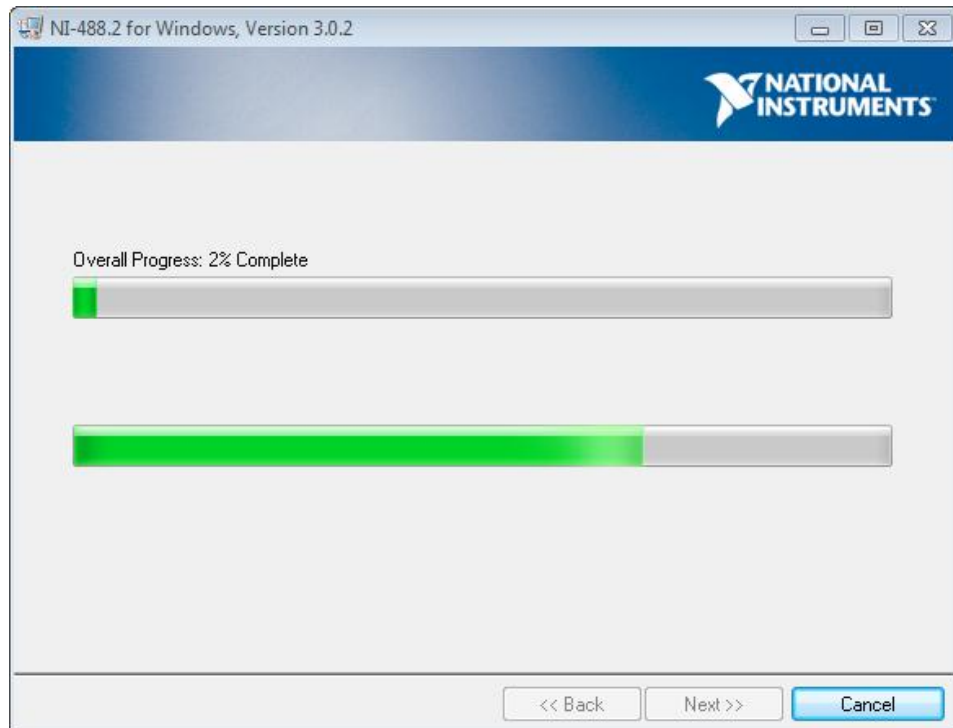




5. Click “Next” and select whether to read and accept the terms in the License Agreement.



6. Click “Next” to install.



7. After the installation finished, click “Next”, and the message “Restart Computer” will pop up. You can select “Restart Later” to restart the computer after all other drivers are installed.

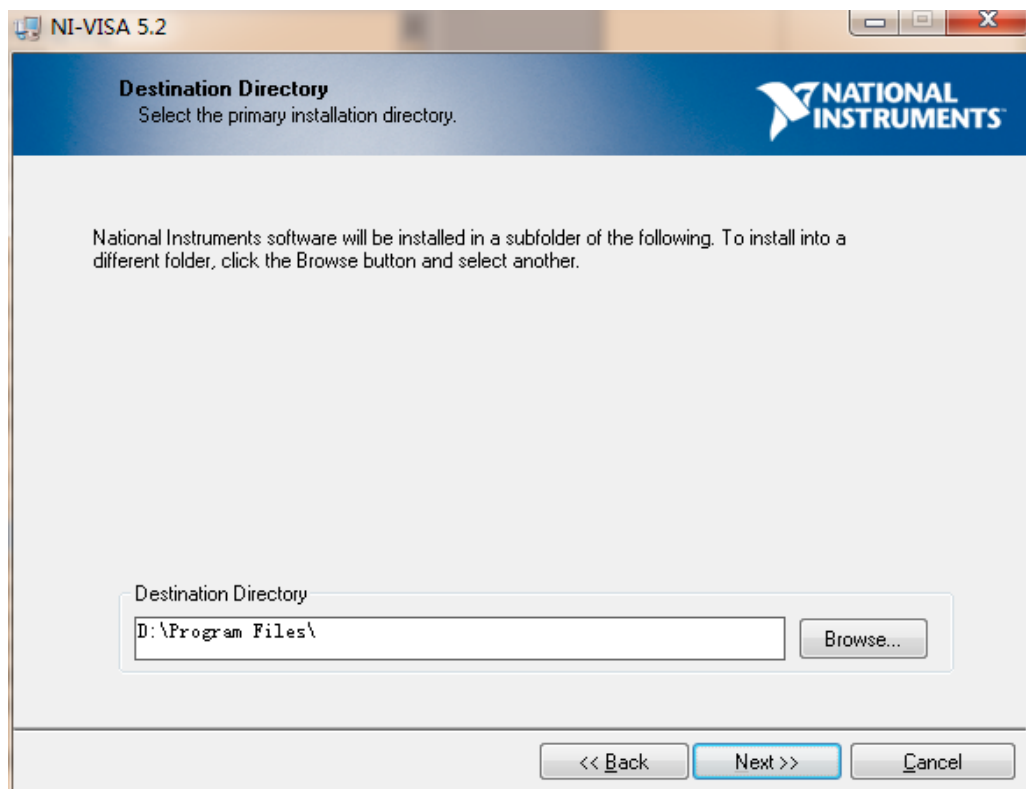
## 2.3 Installing NI VISA

NI-VISA is a VISA I/O standard implemented by NI. It provides the programming interfaces between hardware and application development environments like NI LabVIEW, LabWindows/CVI and Measurement Studio (used for Microsoft Visual Studio).

1. Run setup.exe in the folder Install Package.

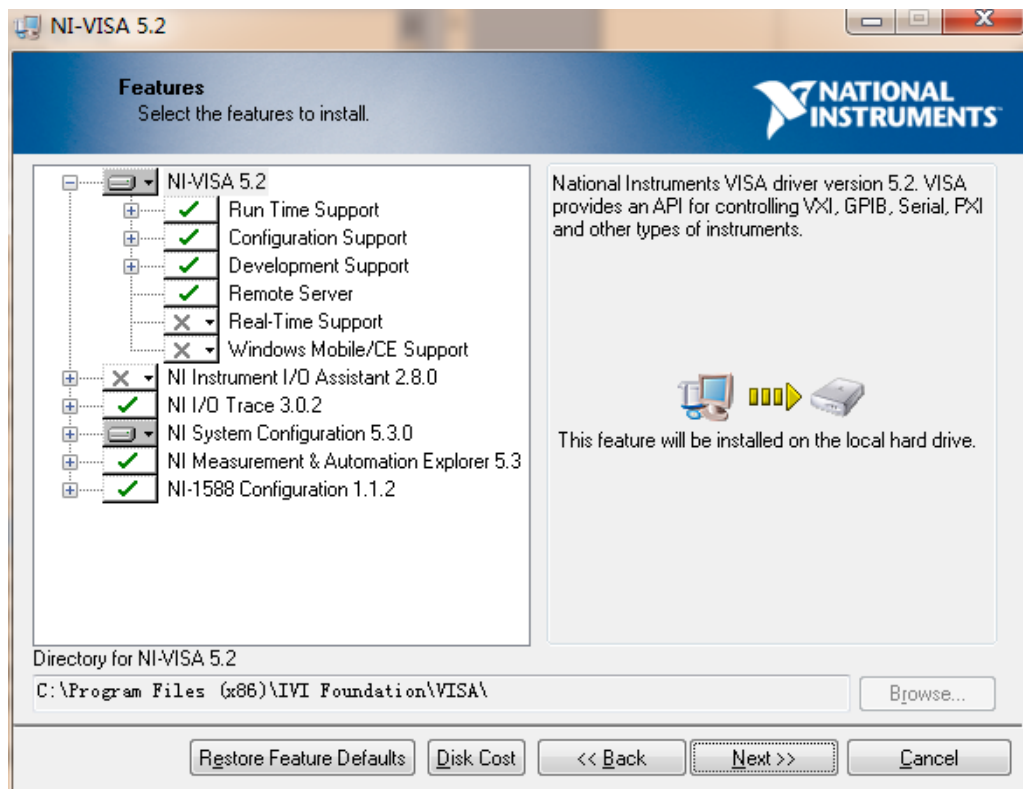


2. Click "Next".

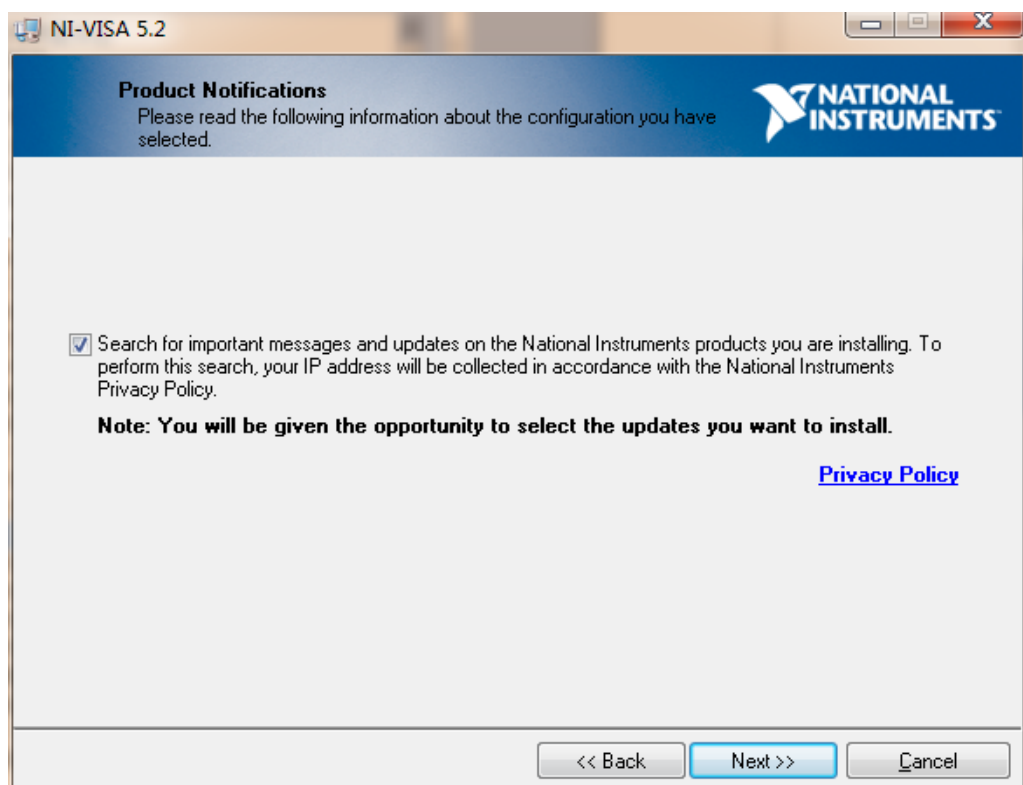


3. Click "Next" to select the components to be installed. If there are no special

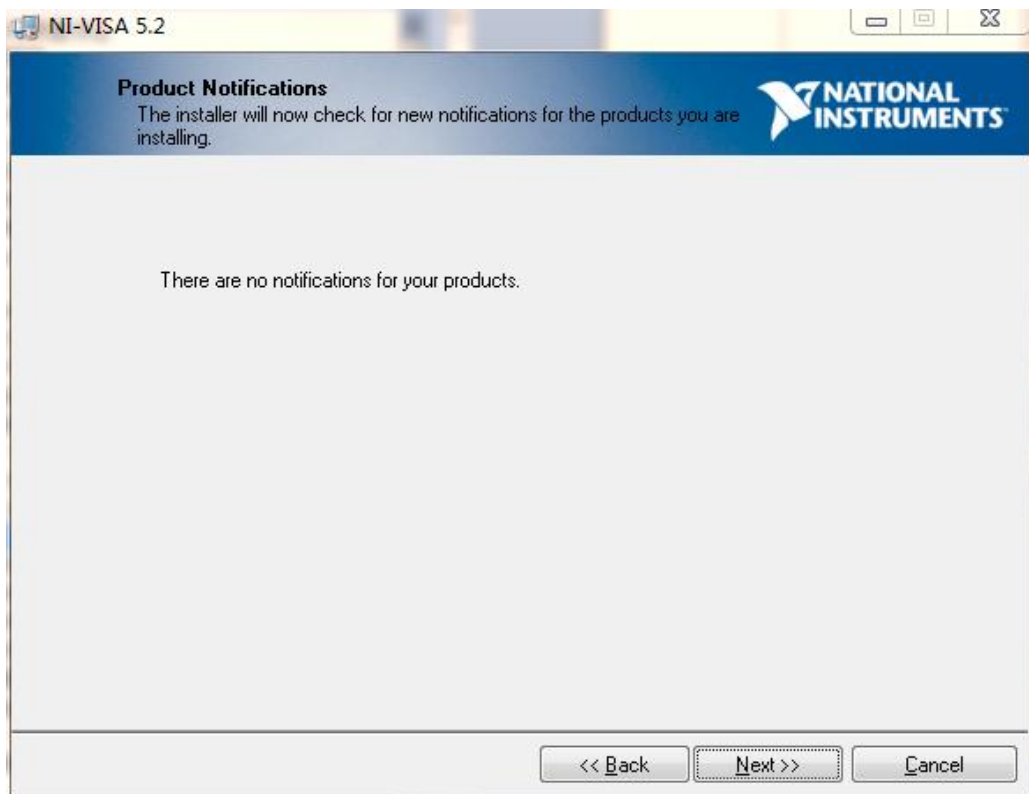
requirements, keep as default.



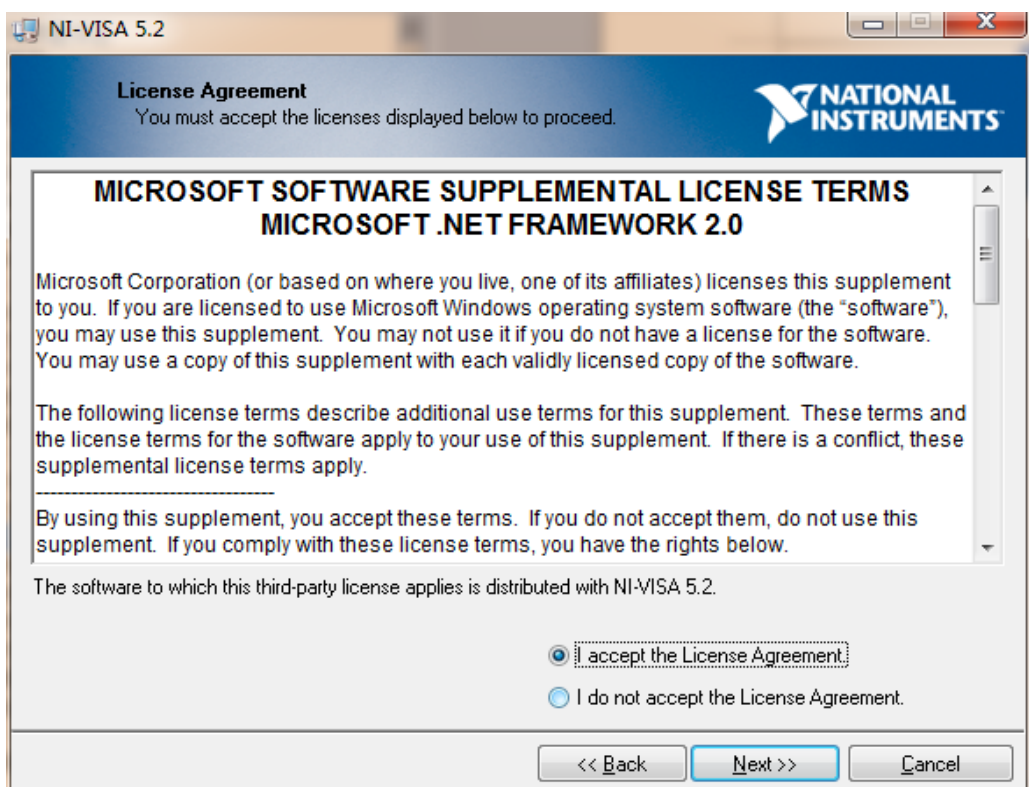
- Click “Next” and select whether to check the check box as shown below in the “Product Notice” page.



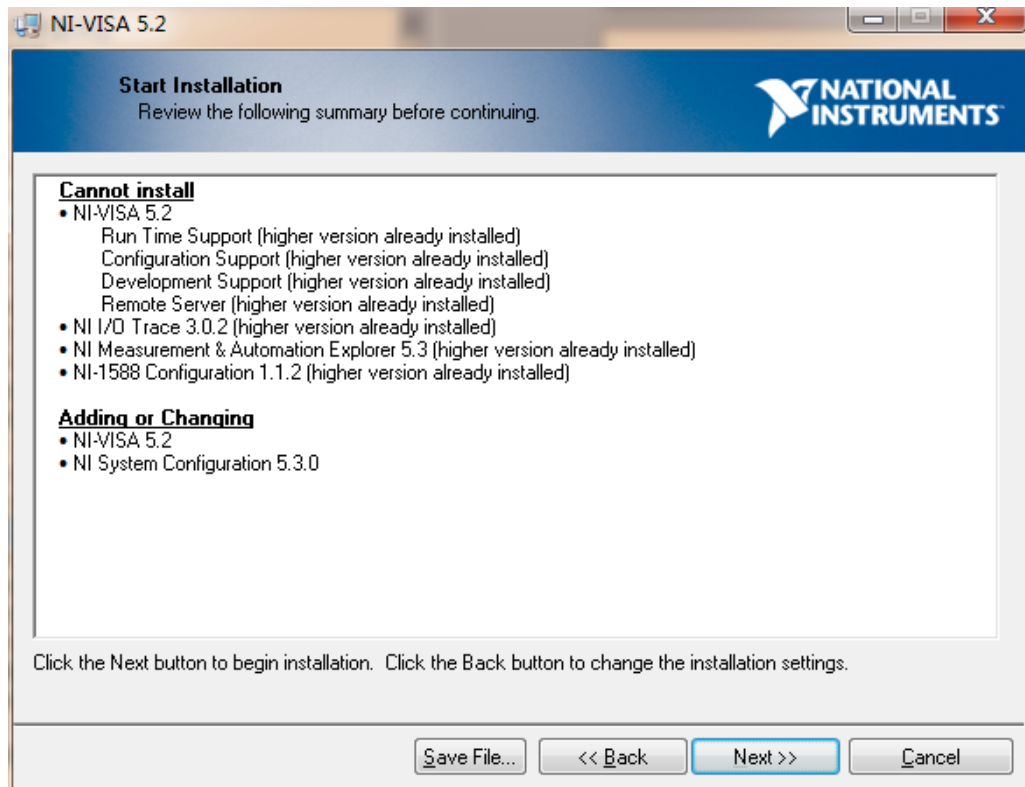
5. Click "Next".



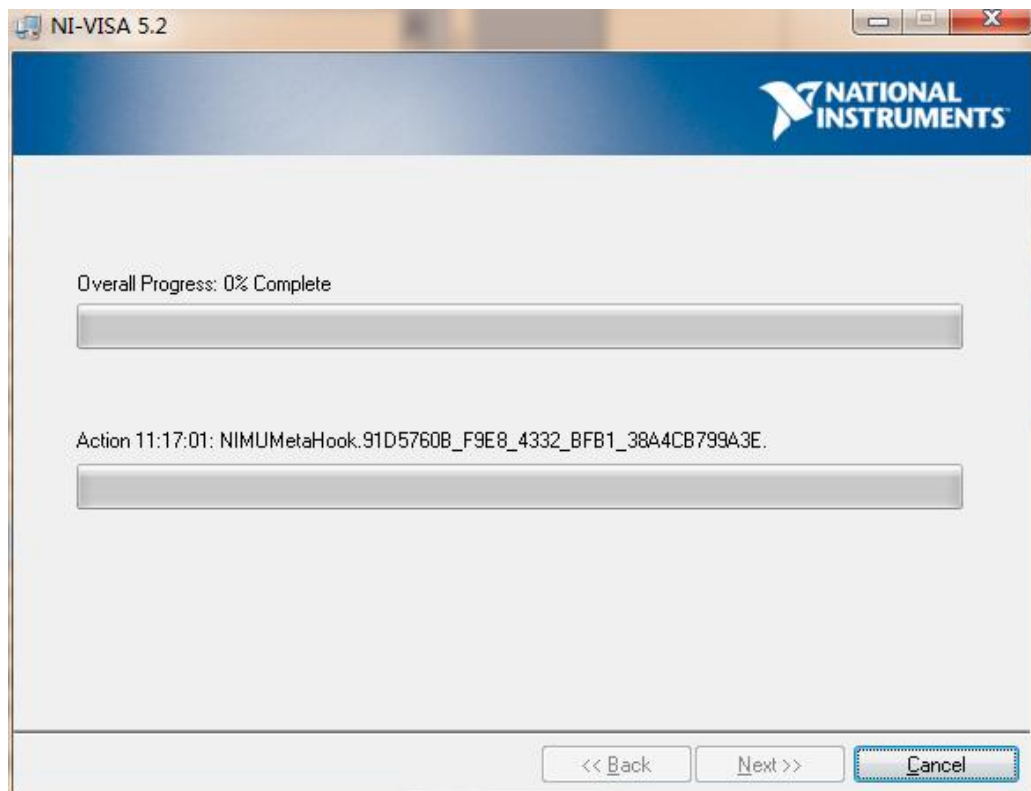
6. Click "Next" and select whether to read and accept the terms in the License Agreement.



- Click "Next" to confirm installation information.



- Click "Next" to install.



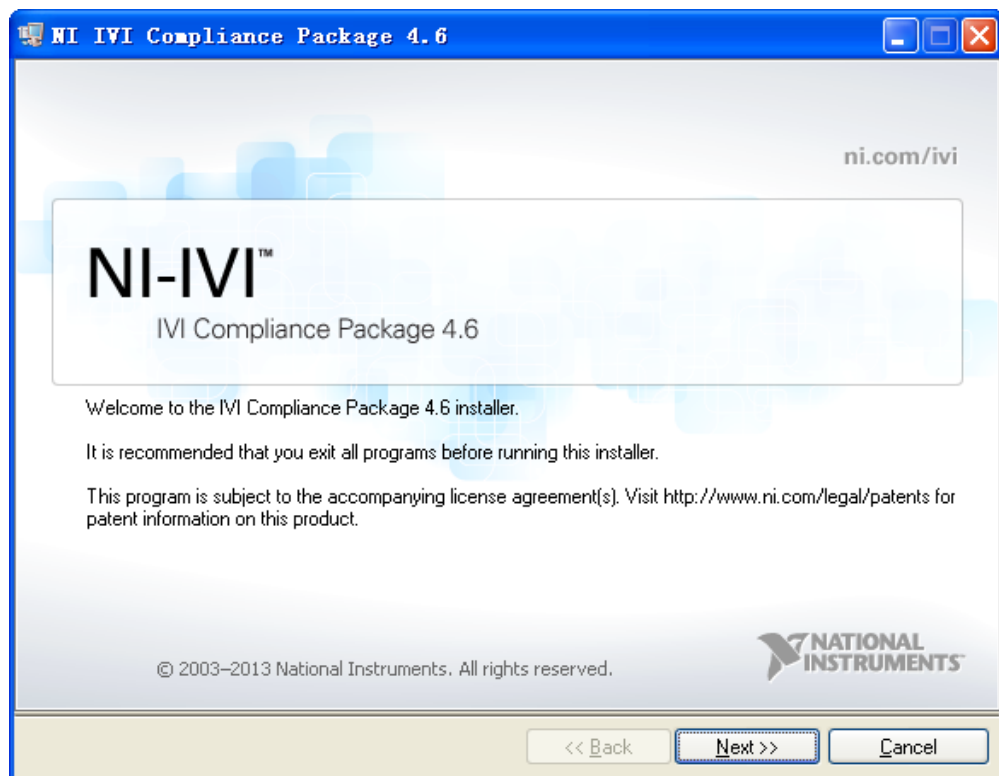
9. After the installation finished, click “Next”, and the message of “Restart Computer” will pop up. Restart the computer to make driver installation effective.

## 2.4 Installing ICP Driver

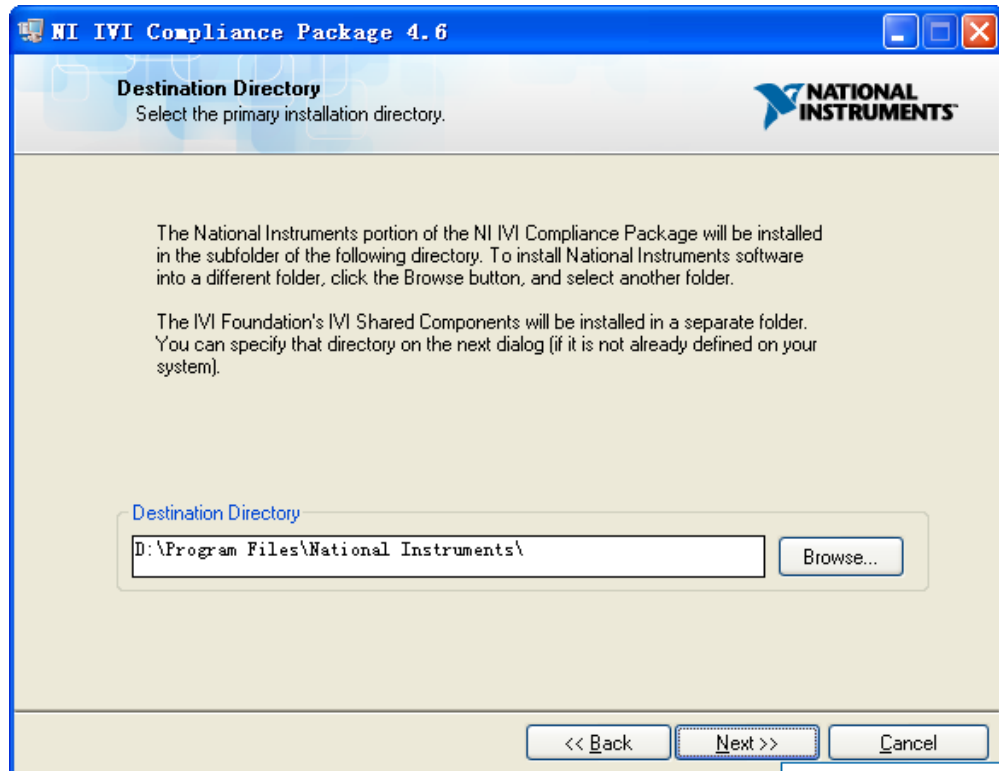
The NI IVI Compliance Package comprises class drivers and support libraries for developing and using IVI device interchangeability applications. ICP is based on and conforms to the latest versions of the instrument programming specifications defined by IVI Fund.

### Operation steps

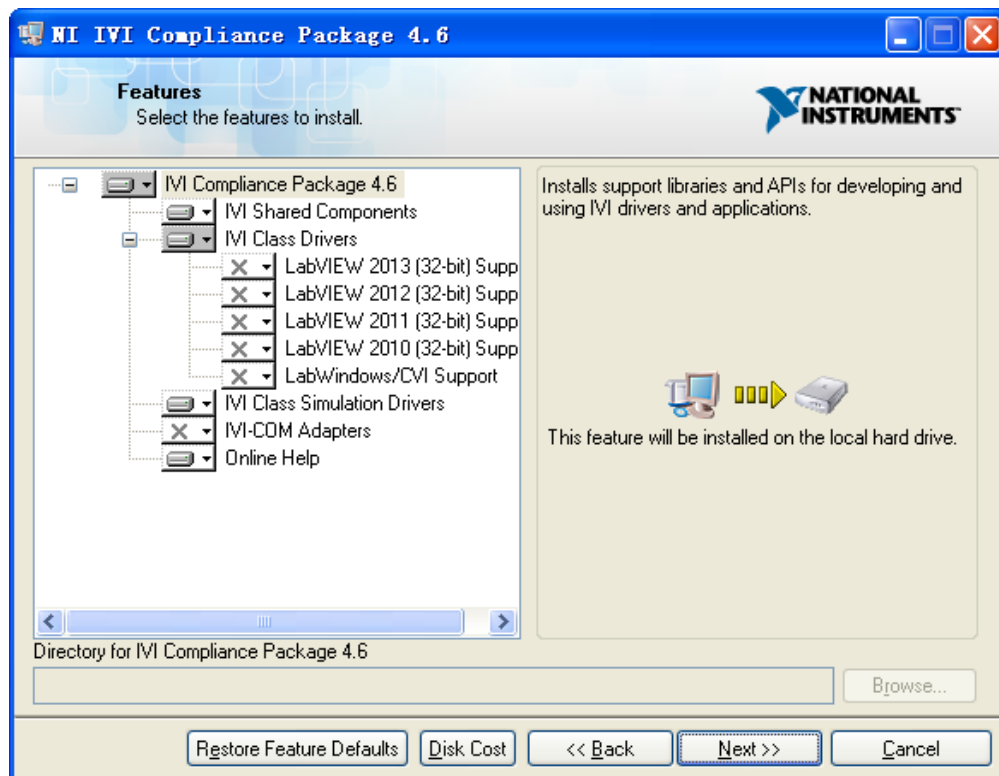
1. Run setup.exe in the folder Install Package.



2. Click “Next” to enter the Select Page of Installation Directory.

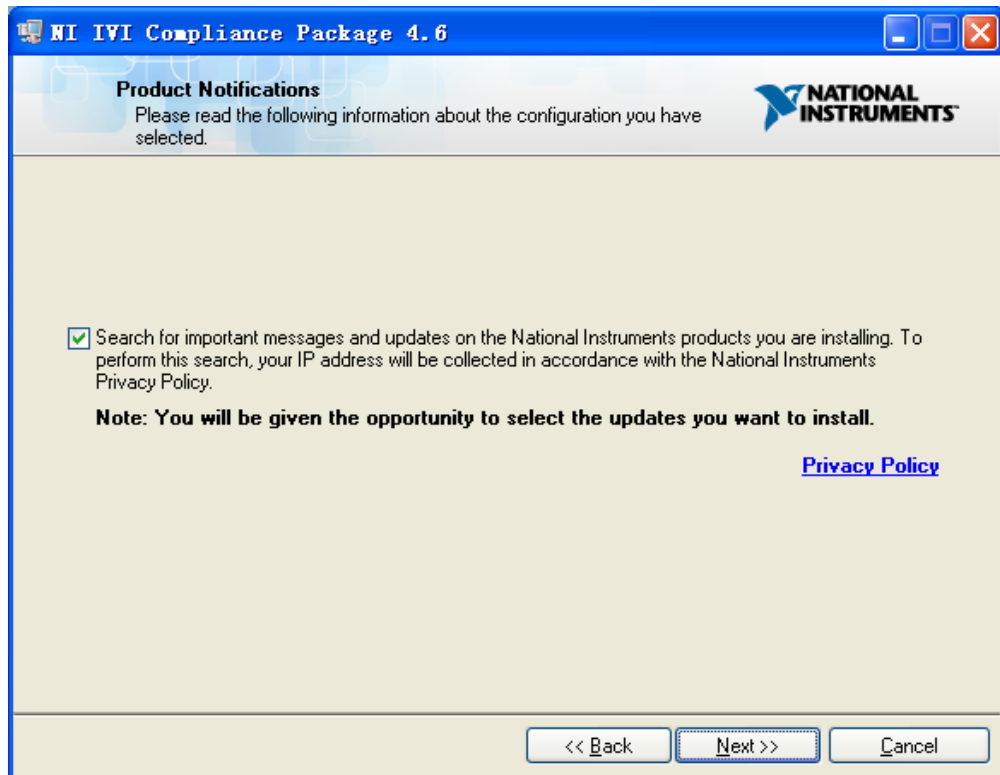


- Click "Next" to select the components to be installed. If there are no special requirements, keep as default.

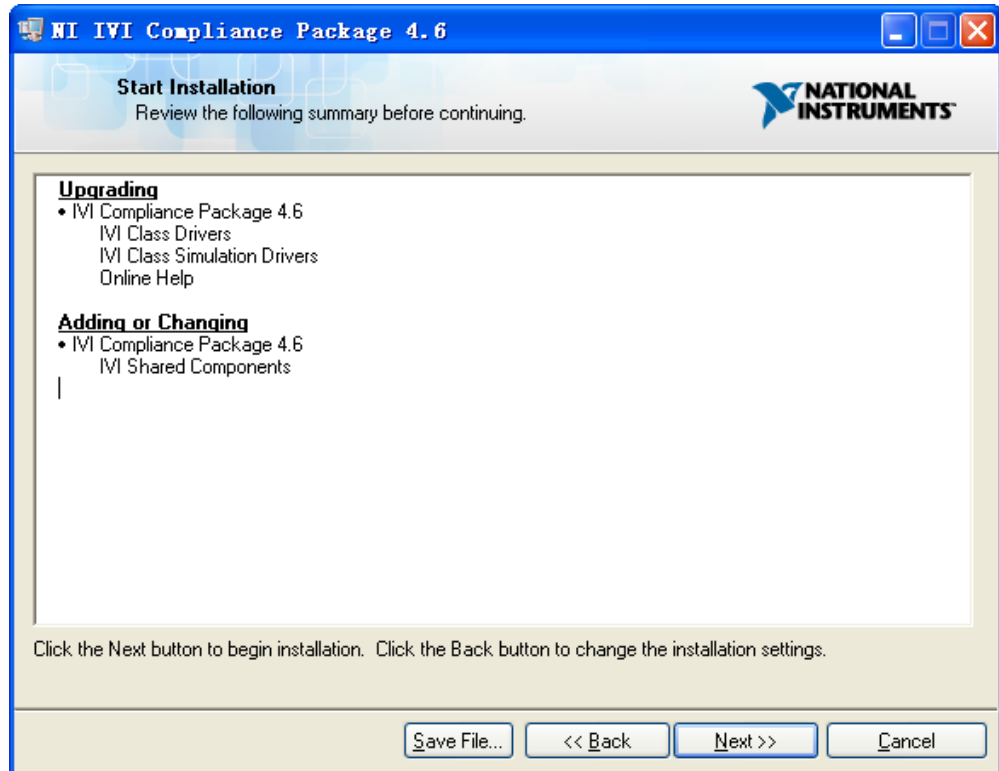




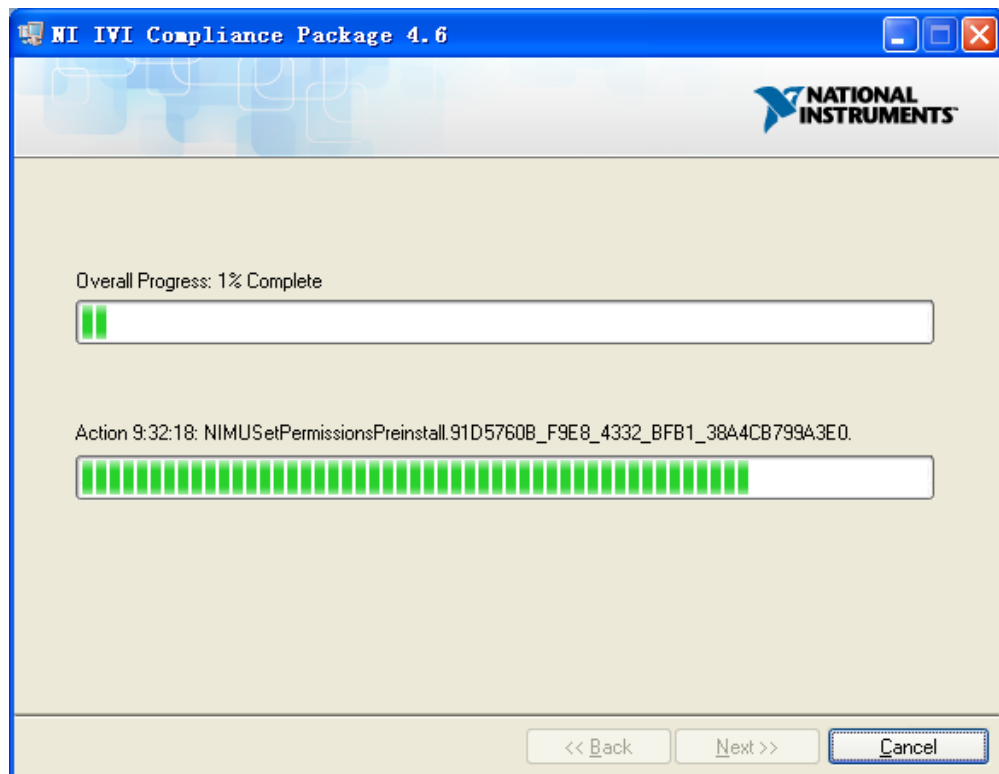
- Click “Next” and select whether to check the check box as shown below in the “Product Notice” page.



- Click “Next” and select whether to read and accept the terms in the License Agreement.
- Click “Next” to confirm installation information.



7. Click "Next" to install.



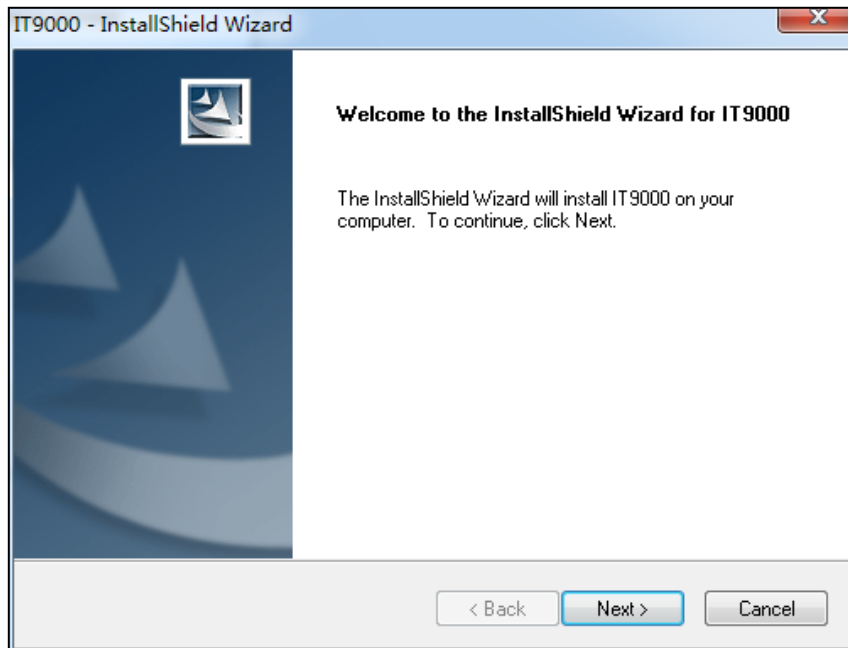
8. After the installation finished, click "Finish", and the message of "Restart

Computer” will pop up.

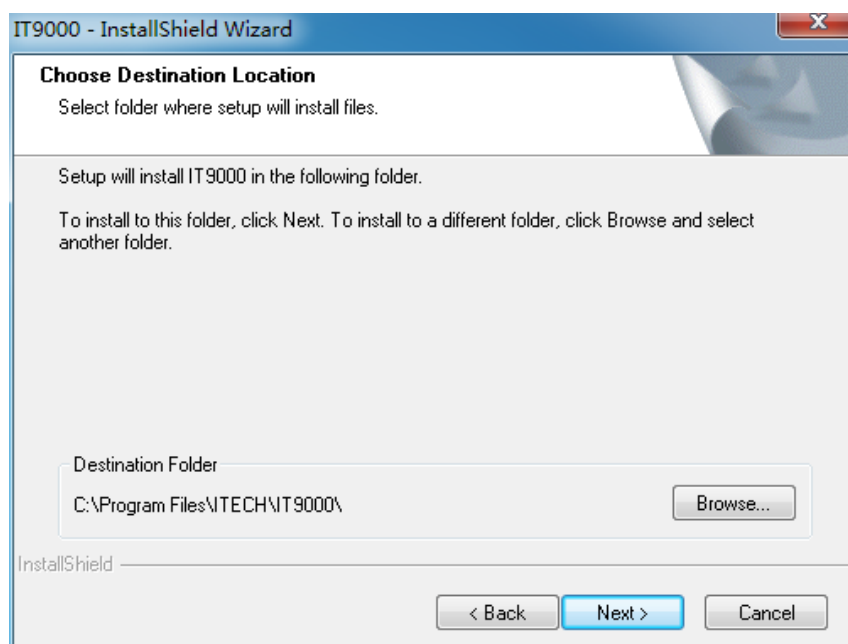
## 2.5 Installing IT9000 Software

### Operation steps

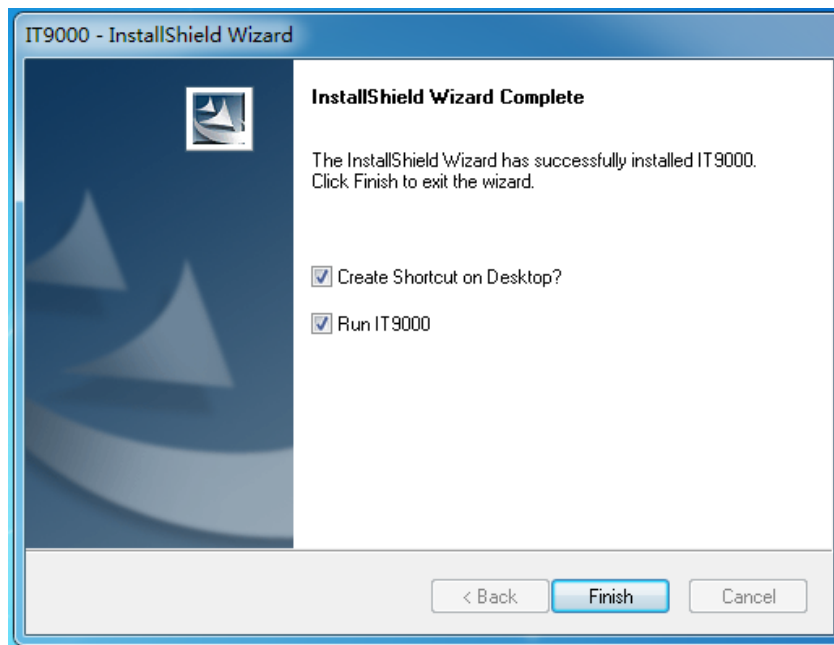
1. Double click and run “setup.exe”.



2. Click “Next”. Confirm the installation information.
3. Click “Next” to deploy software package.



4. Click “Next” to install.



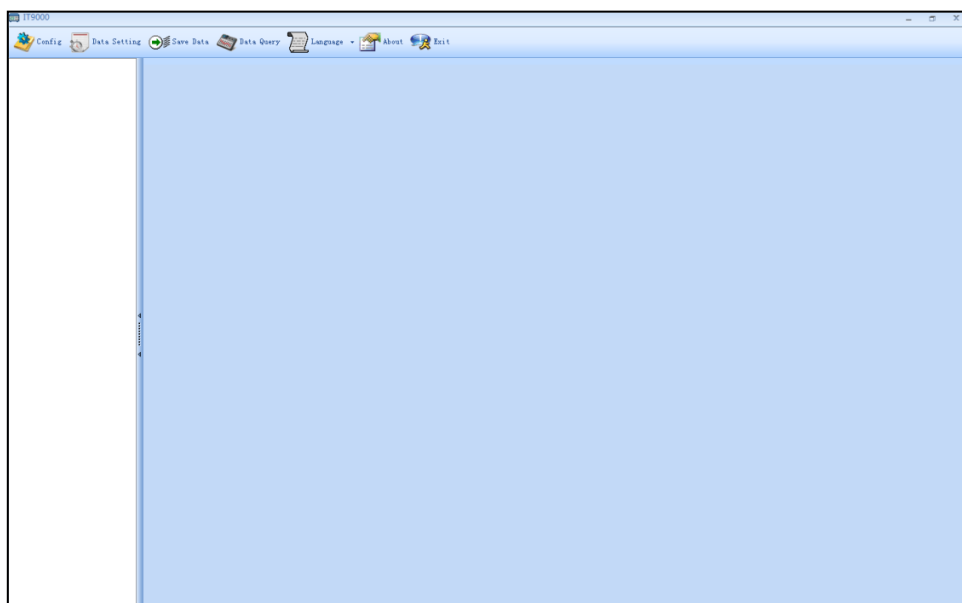
5. After the installation finished, click “Finish”.

## 2.6 Verifying the Installation

After the installation finished, click Start\All Programs\Itech\IT9000 and then click on the IT9000 Run Program to start it.

If you’ve selected the option “Create a Desktop Shortcut” during installation, you may also run the software by directly clicking on the desktop shortcut created.

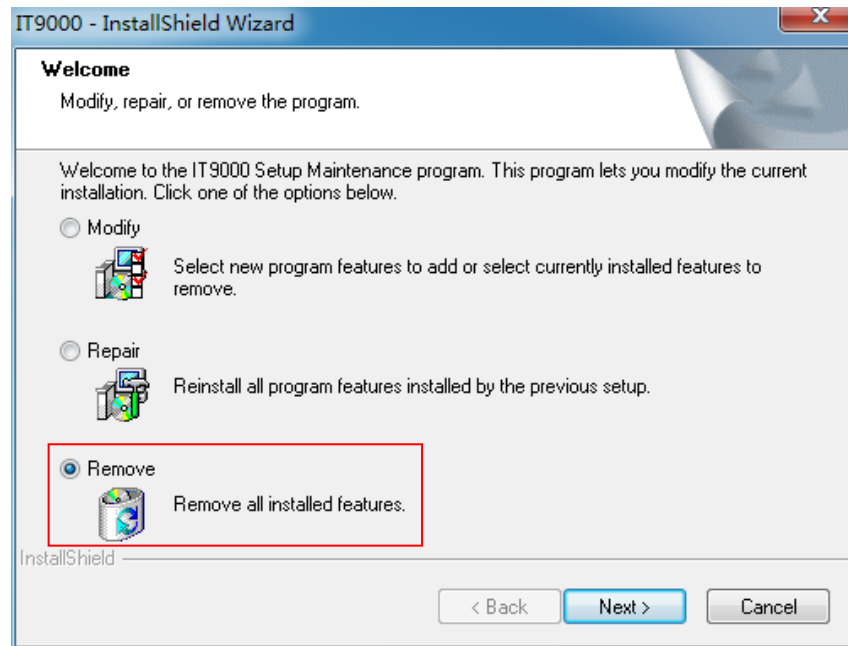
The IT9000 main page is shown as below.



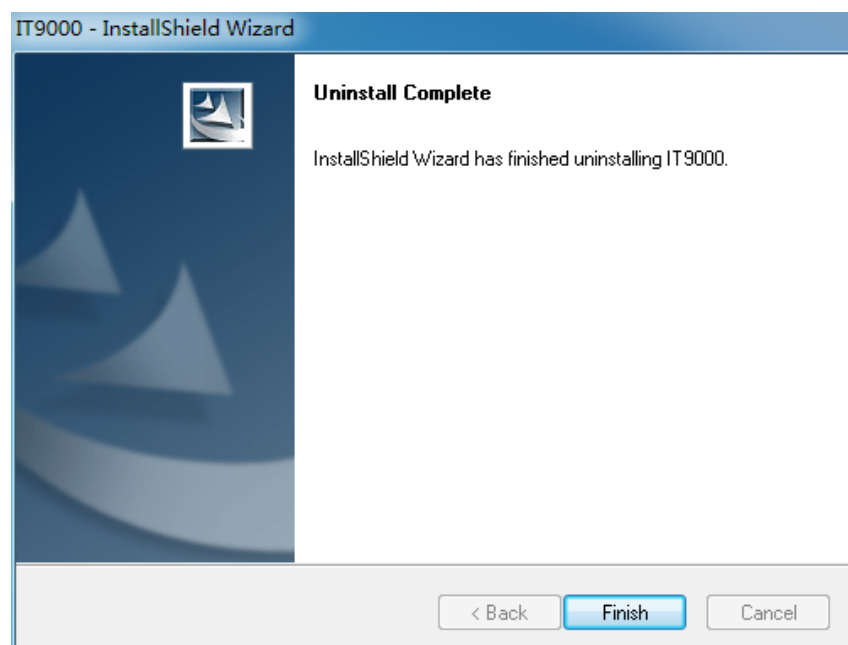
## Chapter3Removing Software

Follow the operation methods below to remove IT9000 software.

1. Execute the executable file “setup.exe” of the IT9000 software.
2. Select "Remove" and click "Next". The uninstall confirmation dialog is displayed.



3. Click “Yes” to begin software removal.
4. Click “Finish” to finish software removal.



## **Contact US**

Thank you for purchasing ITECH products. If you have any doubt about this product, please contact us as follows.

1. Please refer to the CD-ROM of related user's manual in package.
2. Visit ITECH website [www.itechate.com](http://www.itechate.com).
3. Select the most convenient contact for further consultation.